

17,000 SF INDUSTRIAL BUILDING - FOR LEASE

614 N. Washington, Springfield, MO 65806



HIGHLIGHTS

- 17,000 SF plus 3,750 SF Mezzanine
- 11,615 SF Warehouse
- 5,385 SF Office
- Four (4) 8' x 8' Overhead Doors
- Lot Size: 1.13 Acres
- Available: January 1, 2018
- \$5.00 / SF = \$7,084.00 / Month
- NNN Lease
- Zoned HM: Heavy Manufacturing
- 20' Eve Height
- Close Proximity To: MSU, OTC, Drury
Downtown Springfield & Government Plaza

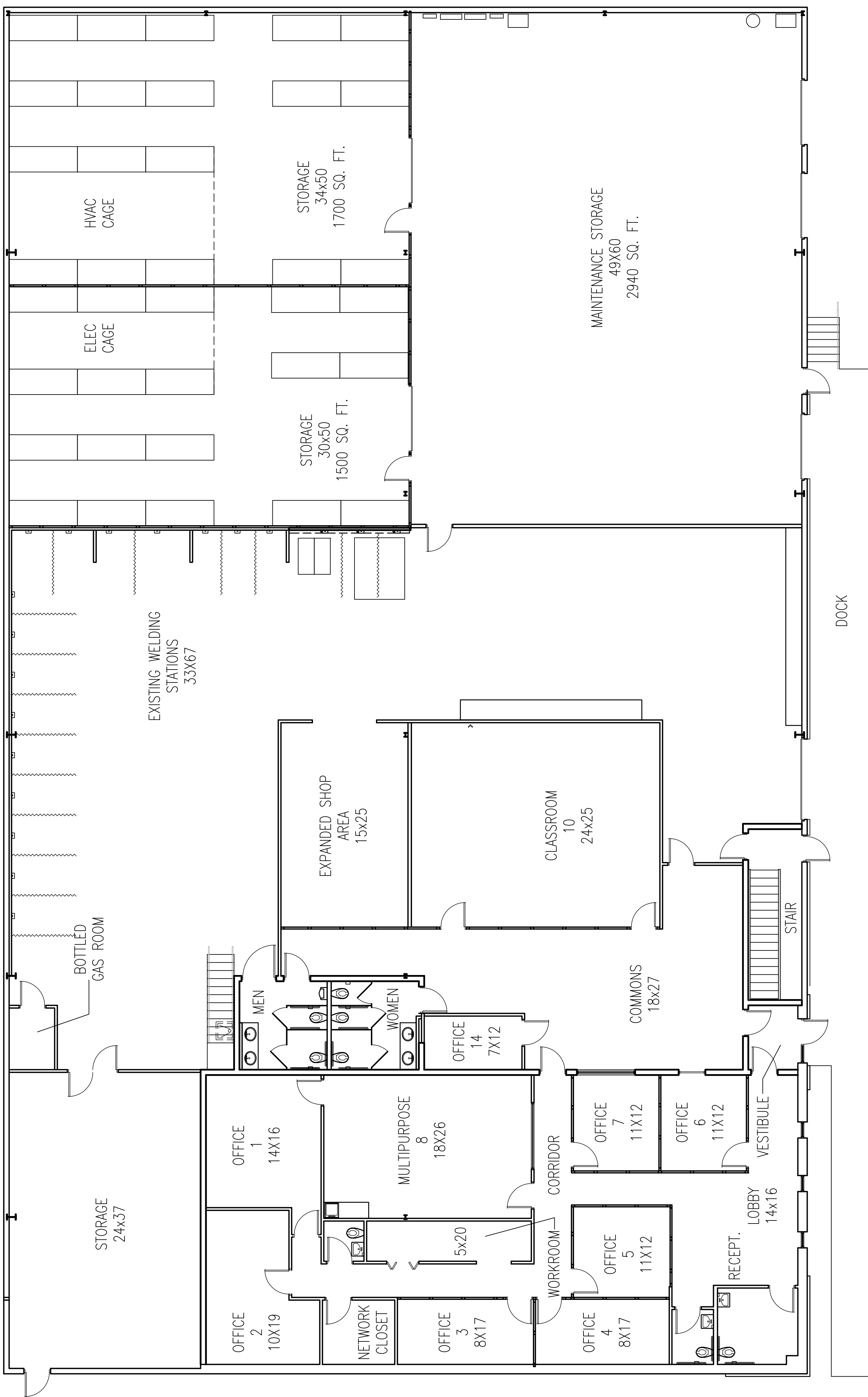
614 N. Washington

Springfield, MO 65806



2921 S. National Ave., Springfield, MO 65804

(417) 887-5535 email: beall@billbeall.com



CENTER FOR WORKFORCE DEVELOPMENT

1
A1.1

NOT TO SCALE

TOTAL BUILDING SQUARE FOOTAGE: 17,000



614 N. Washington

Springfield, MO 65806



2921 S. National Ave., Springfield, MO 65804
(417) 887-5535 email: beall@billbeall.com